

# m-tec® beton-dragon IIa

The m-tec® beton-dragon IIa is a compact unit including a 22 m³ pressure silo. The integrated system ensures dust-free, shock-free, continuous and efficient work on your construction site. The pumping capacity of the beton-dragon IIa can be quickly and easily adjusted to different parameters using a frequency converter.

### m-tec® beton-dragon IIa Areas of application

The compact unit is used where long conveying distances have to be overcome. This is particularly necessary in building construction and civil engineering.

### m-tec® beton-dragon IIa Scope of delivery

In the standard version, the beton-dragon II is supplied including 22m³ pressure silo, dosing blowing screw, pneumatic unit, control unit and remote control.

### m-tec® beton-dragon IIa Accessories

Additional features include delivery hoses, a spray lance and extension cables for the remote control.

Technical Data	beton-dragon IIa
max. operating pressure:	6 bar
Delivery rate:	approx. 1,0-6,0 m³/h
Dosing blowing screw:	
Silo connection:	DN250
Weight:	approx. 400 kg
Performance:	3 kW 400 V 3 ph
Electrical connection:	400 V 50 Hz 3 ph
Conveying hose connection:	DN50 / DN38

\* Conveying volume and conveying distance depend on the material to be conveyed, diameter of the conveying hoses, type of conveying hoses and capacity of the connected compressor.



Simply scan the QR code with your smartphone and find out more on our website.

m-tec mathis technik gmbh

Otto-Hahn-Straße 6

D-79395 Neuenburg

phone +49 7631 709 - 122

sales1@m-tec.com

www.m-tec.com

m-tec-beton-dragon-II-EN

# m-tec® beton-dragon IIa

The compact unit for shotcrete



The m-tec® beton dragon IIa has been specially designed for processing factory premixed dry spray mortar or concrete.



# Plus points

The beton-dragon is the ideal unit for new construction or repair of structures in building construction, civil engineering or tunnel construction. With the m-tec® beton-dragon IIa system, very long conveying distances and large conveying volumes can be achieved.

## Building 4.0

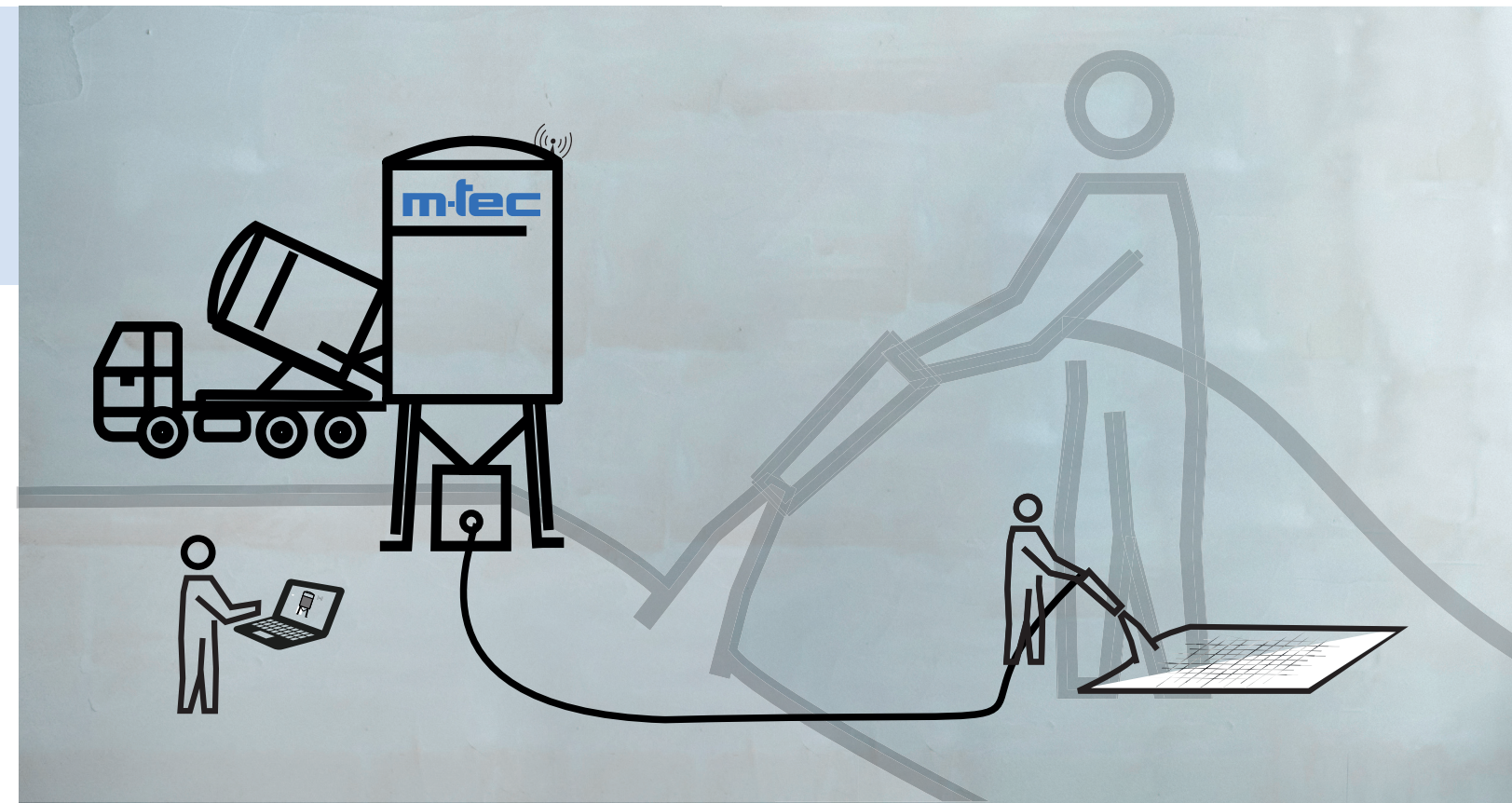
The regular recording of machine status and convenient online access to the necessary data and information in the cloud have now arrived on the construction site - no problem with the m-tec connect® beton-dragon IIa MO.

## Operation

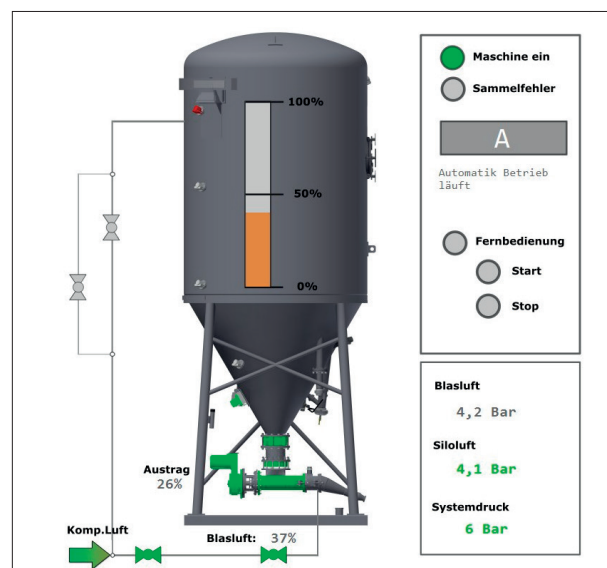
With its clearly structured operating and control cabinet elements, the m-tec® beton-dragon IIa is available for many tasks on the construction site - making work fun!

## Handling

System integration guarantees dust-free, shock-free, continuous and efficient work.



^ This makes work fun:  
efficient and economical!



^ Continuous improvement succeeds when you monitor and use your machine data - welcome to construction site 4.0



## m-tec® technology for better building

m-tec® develops and manufactures construction site technology for classic applications as well as for modern construction sites: From transportation and the provision of dry mortar products to their application on your construction site, we are your one-stop shop. All over the world, in almost 100 around the globe, m-tec® has made construction better, faster and, above all, more economical.

We are unique in this.

And to keep it that way, we stay on the ball with our partners when it comes to new developments. For example, m-tec® has played a key role in the development of 3D concrete printing and thus contributed to the success of this new technology.



Monitoring



3D concrete printing